



YAN CHAI HOSPITAL YIM TSUI YUK SHAN KINDERGARTEN

Tuen Mun

Address : UNIT 201, FLOOR 2, PO TIN SHOPPING CENTRE,
PO TIN INTERIM HOUSING, TUEN MUN,
NEW TERRITORIES

Tel. : 2466 8966

Fax. : 2466 2277

Joining
2021/22 KG Education Scheme

School No. 539163

Location No. 0001

School Information	
School Category	Non-profit-making
Student Category	Co-educational
Name of School Supervisor	MS TSUI YUK SHAN
Name of School Principal	MS PANG MEI LING
School Founding Year	2000
Total No. of Permitted Accommodation of Classrooms in Use (Data as of Sept. 2020)	174
Number of Registered Classrooms	7
Outdoor Playground	Yes
Indoor Playground	Yes
Music Room	Yes
Other Special Room(s) / Area(s)	Computer Corner, Activity Room, Sensory integration Zone
Total No. of Principal & Teaching Staff (Data as of Oct. 2020) *	18
School Website	http://www.ytyskg.edu.hk
Quality Review : Result and Report	Meeting the prescribed standards https://www.edb.gov.hk/attachment/tc/edu-system/primary-kindergarten/quality-assurance-frame-work/qv/qv-report/YCH_YimTsuiYukShan.pdf

No. & Qualification of Principal & Teaching Staff (Data as of Oct. 2020) *	
Academic Qualification	
Degree holders	12
Non-degree holders	6
Professional Qualification	
C(ECE) or above	18
Qualified KG teachers	0
Other teacher trainings	0
Qualified assistant KG teachers	0
Others	0

* Excluding staff serving aged 0-2

Teacher to Pupil Ratio (Data as of Oct. 2020)	
Teacher to pupil ratio in morning session	1 : 9.1
Teacher to pupil ratio in afternoon session	1 : 6.8
Ratio includes classes aged 2-3	No

No. of Enrolment (Data as of Oct. 2020)				
	Nursery	Lower KG	Upper KG	Total
AM Session	9	16	16	41
PM Session	0	0	0	0
WD Session	35	39	48	122

Annual Fees (2021 / 22 School Year)				
		Nursery	Lower KG	Upper KG
Annual Fees After Deduction of Government Subsidy (No. of Instalment)	AM Session	Free	Free	Free
	PM Session	Free	Free	Free
	WD Session	\$9,980 (10)	\$9,980 (10)	\$9,980 (10)

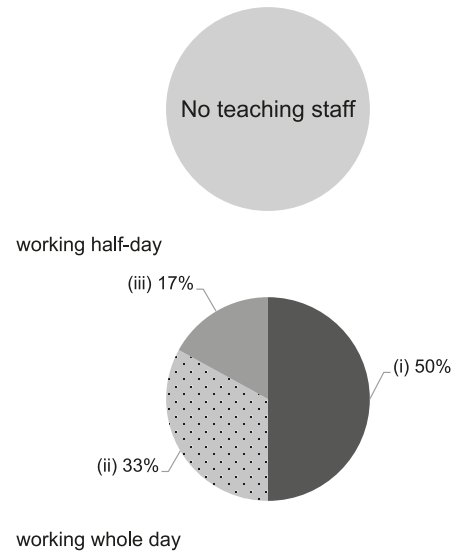
Please refer to the Fees Certificate for details of fees information.

Child Care Services (Data as of Oct. 2020)			
With child care services for children aged 2-3	-	With child care services for children aged under 2	-
Fee level (per annum)	(half - day)	No. of enrolment aged 2-3	0
	(full - day)	Joining Child Care Centre Subsidy Scheme	-
Providing occasional child care services	-	Providing extended hours services	-

Curriculum Details	
Curriculum type : Local	
Curriculum planning	
<p>Starting from early child school admission, we aim at developing children's abilities in all aspects: Learning ability, Self-care ability, Social skill Preschool Class: Building children's foundation. Low-Class: An important stage for abilities training. High-Class: Abilities strengthening.</p> <p>We will follow the "Kindergarten Education Curriculum Guide" (2017) to plan curriculum. Children of nursery classes will not be asked to write, and there will not be mechanical copying exercises and drills on calculation.</p>	
Learning / Teaching approach & activities	
<p>Through different strategic projects to integrate into children's school life: Learning Ability: Group discussion learning, Autonomic grouping, Project approach, Science exploration area, Reading award plan, Experience learning, "Good-children" listing. Self-care Ability: Eating refreshments, Going to toilet and washing hands, Tidy-up stuff, Wearing jacket, Brushing teeth, Floding homework & paper, Folding quilt. Social Skill: "Good-Friends" project, Visits & activities, Open competitions & performance, "Service Angel" award, Small group award, Grasshopper scout.</p>	
Assessment of children's learning experiences	
<p>We develop a personal learning portfolio to record children's learning achievements through continuous observations.</p>	

Monthly salary range of principal & teaching staff (Data as of Mar. 2021)

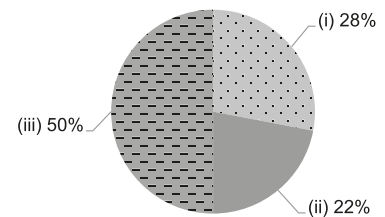
- (i) ≤ \$30,000
- (ii) \$30,001 - \$40,000
- (iii) > \$40,000



School Characteristics	
School vision and mission	
<p>Vision - To provide quality whole-person education in the spirit of "Doing Good To Society Through Benevolence", to cultivate the students to become pillars of the nation. Mission – To create a quality pre-school education community where children are provided with a creative curriculum that focuses on developing their full potentials and lays a good foundation for early childhood education.</p>	
Support to students	
<p>New students Adaption Period, schools affiliated with Yan Chai Hospital, scholarships, Subsidies, Assistance and school social worker services.</p>	
Support to non-Chinese speaking (NCS) students	
<p>Received Grant for Support to NCS Students; appoint additional teaching staff / teaching assistants to support NCS students learning Chinese; create an enriched language environment for mastery of the Chinese language; create an inclusive learning environment to facilitate students' integration.</p>	
Support to students with special needs	
<p>Joining the On-site Pre-school Rehabilitation Services.</p>	
Link with parents	
<p>Parent-teacher association : Yes</p>	
Other activities / communication with parents	
<p>Parent-Teacher Association, School Website, Parents' Day, Parents' Class Visits, Seminars, Parents Birthday Tea Party, Parent-Child Activities, Parents Workshops, Parent Volunteer Team, School Social Worker Services and School Publication.</p>	

Working experience of principal & teaching staff in pre-primary education (Data as of Mar. 2021)

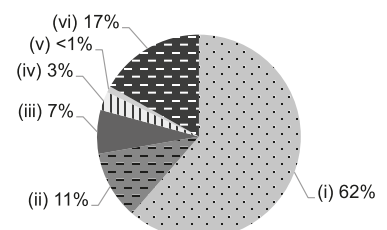
- (i) < 4 years
- (ii) 4 - 7 years
- (iii) > 7 years



2019/20 School Expenditure Information

Expenditure information based on audited account Yes

- (i) salary of principal & teaching staff
- (ii) non-teaching staff salary
- (iii) rent, management fees, rates & government rent
- (iv) teaching resources
- (v) staff training & professional development
- (vi) other expenses



Major Paid Items Reference Price (2020 / 21 School Year)			
Summer uniform	\$379 / set	Winter uniform	\$677 / set
School bag	\$113 / each	Tea and snacks	\$1,100 / year
Textbooks	Nil	Exercise books/ workbooks	Nil
Stationery	Nil	Bedding items	Nil